



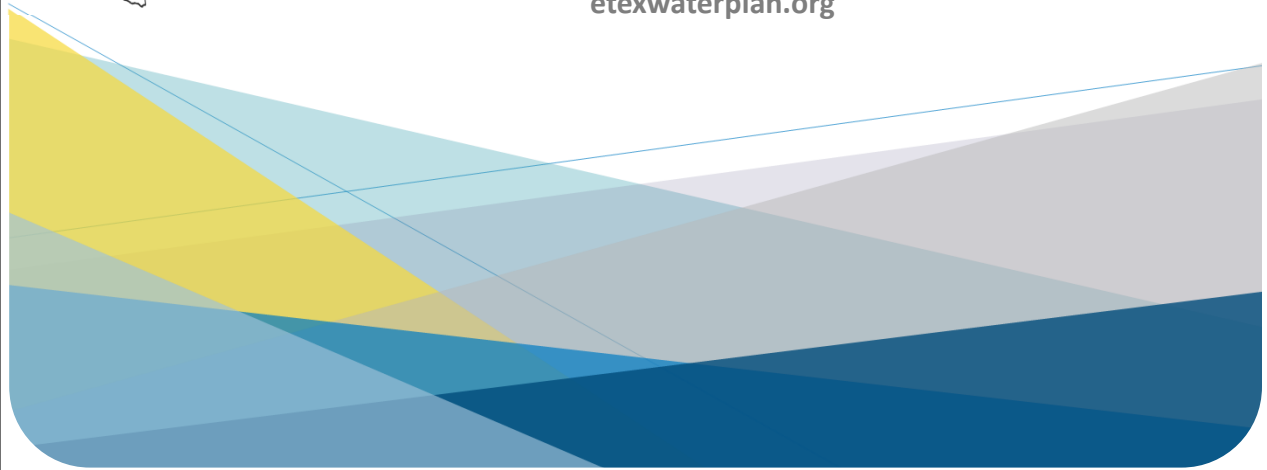
# Region I

East Texas Regional  
Water Planning Group



## Regional Water Planning Group Meeting

[etexwaterplan.org](http://etexwaterplan.org)



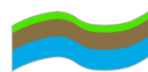
April 7, 2022

## Agenda Item No. 8

Report from Consultant Team



PLUMMER



Advanced Groundwater Solutions, LLC

**AGS**

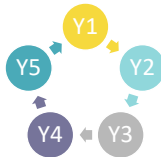


**FREESE  
AND  
NICHOLS**

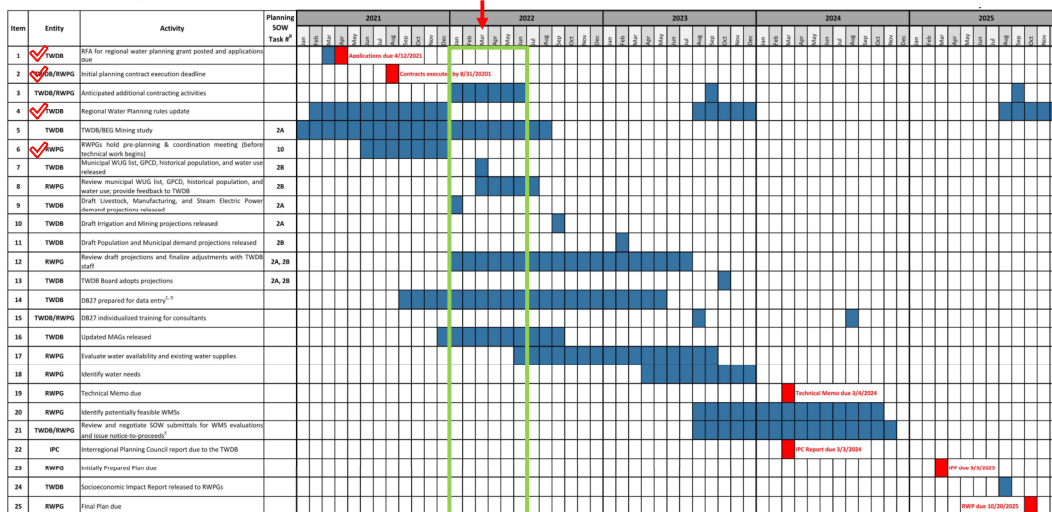


# Consultant Team Agenda

- a. Review of 6<sup>th</sup> Cycle Water Planning Schedule
- b. Review of available Draft Projections & Methodology



## Schedule (updated 10/19/21)



<https://www.twdb.texas.gov/waterplanning/rwp/planningdocu/2026/documents.asp>





SUPPLY



DEMAND



STRATEGIES

## Schedule cont.

(updated 10/19/21)

Item	Entity	Activity	2022					
			Jan	Feb	Mar	Apr	May	Jun
5	TWDB	TWDB/BEG Mining Study						
7	TWDB	Municipal WUG list, GPCD, historical population, and water use released						
9	TWDB	Draft Livestock, Manufacturing, and Steam Electric Power demand projections released						
14	TWDB	DB27 prepared for data entry						
16	TWDB	Updated Modeled Available Groundwater (MAGs) released						
3	TWDB/RWPG	Anticipated additional contracting activities						
8	RWPG	Review municipal WUG list, GPCD, historical population, and water use; Provide feedback to the TWDB						
12	RWPG	Review draft projections and finalize adjustments with TWDB staff						
17	RWPG	Evaluate water availability and existing water supplies						

Derived from information available at <https://www.twdb.texas.gov/waterplanning/rwp/planningdocu/2026/documents.asp>



## Draft Projections & Methodology

- Municipal Demand
  - Coming February 2023; adjustments due August 2023
  - Water User Group List adjustment requests due July 2022
- Non-Municipal Demand Revision Requests due July 2023:
  - Livestock
  - Manufacturing
  - Steam-Electric Power
  - Mining, coming August 2022
  - Irrigation, coming August 2022

2026 Regional Water Plans Projections Methodology Overview (TWDB) Presentation dated 01/26/22



# Municipal Demand

(Water User Group = WUG)

- **Municipal WUGs: utility water use of 100 acre-feet or more**
  - based on utility boundaries and data submitted via TWDB's annual Water Use Survey
  - 31 TAC § 357.10(43)
  - Utilities with less than 100 acre-feet are lumped into "County-Other" for the county where the utility is located
- WUGs in the 2021 RWP will be carried over, as long as they have active public water systems
- All new utilities will be evaluated based on water use from 2015-2019
- No Sub-County-Other-WUGs in DB27 this plan

2026 Regional Water Plans Projections Methodology Overview (TWDB) Presentation dated 01/26/22



# Municipal WUG List Modifications

(adjustment requests due July 2022)

- Criteria for adjustment:

A proposed water user group must meet the definition in 31 TAC §357.10(43) and the following criteria to be included as a new, discrete entity in the 2026 Regional Water Plan. One or more of the following criteria must be verified by the regional water planning group and the Executive Administrator:

1. Evidence of **errors identified in the historical water use** for a public water system or utility, which would determine whether the system or utility meets the water user group definition.
2. Evidence of **errors in the ownership type of a public water system or utility** provided in the Texas Drinking Water Watch.
3. Evidence of **recent changes of the ownership of a public water system or utility** through merge or annexation.

Exhibit C General Guidelines for Development of the 2026 Regional Water Plans (TWDB) dated June 2021



# Livestock Methodology

Same methodology as 2021 RWP

Baseline = 5-year average (2015-2019)

- County water use estimates, based on USDA inventory \* water use coefficients
- Water use survey facilities

Follows same projection trend as 2021 RWP

- 2070 – 2080 held constant

Draft projections released in January 2022

2026 Regional Water Plans Projections Methodology Overview (TWDB) Presentation dated 01/26/22



# Livestock Methodology

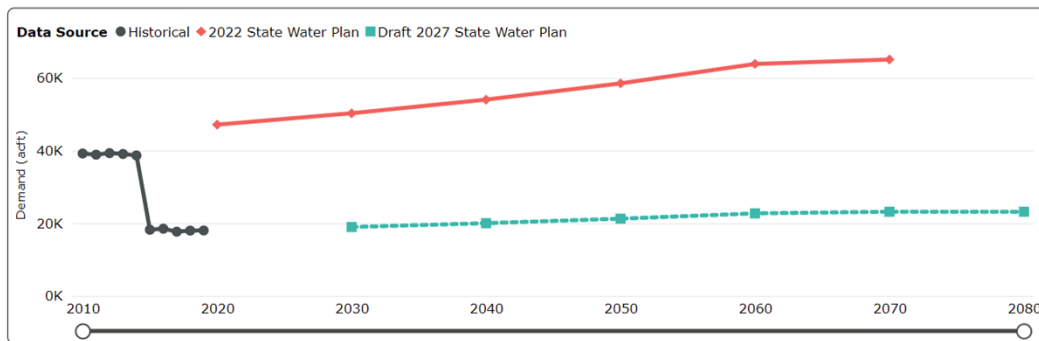
## Water Use Coefficients

TWDB Category	USDA Data Type	2026 RWP Water Use (gallons/head/day)	2021 RWP Water Use (gallons/head/day)
Cattle	Milk	55	75
	Fed & Other Cattle	15	15
Chickens	Layers	0.09	0.086
	Pullets, Replacement		
	Roosters	0.09	0.077
	Broilers		
Equine	Horses & Ponies	12	12
	Mules, Burros, & Donkeys		
Hogs	Hogs	5	11
Sheep	Sheep	2	2
Goats	Milk	2	0.5
	Meat & Other		
	Angora		
Turkeys	Turkeys	0.2	0.2

2026 Regional Water Plans Projections Methodology Overview (TWDB) Presentation dated 01/26/22



# Historical & Projected Livestock Demand (ACFT)



<https://www.twdb.texas.gov/waterplanning/data/projections/2027/projections.asp>



## Manufacturing Methodology

Baseline \* 2010-2019 historical water use survey rate of change = 2030

CBP 2010-2019 historical number of establishments rate of change used to project each decade 2040-2080

2026 Regional Water Plans Projections Methodology Overview (TWDB) Presentation dated 01/26/22



## Manufacturing Methodology (cont.)

Baseline = highest county water use (2015-2019) + unaccounted water use estimates

- Historical water use survey
- U.S. Census Bureau County Business Patterns (CBP) historical number of establishments

Water Sources: fresh and brackish groundwater, fresh surface water, reuse

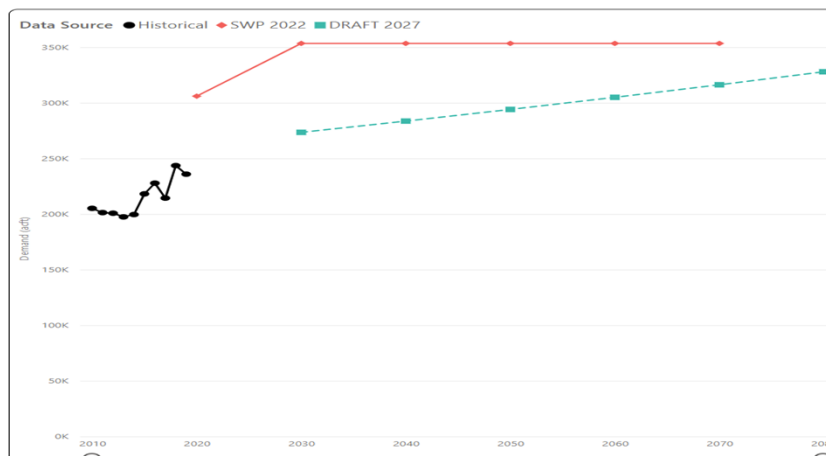
- Total intake

Draft projections released in January 2022

2026 Regional Water Plans Projections Methodology Overview (TWDB) Presentation dated 01/26/22



## Historical & Projected Manufacturing Demand (ACFT)



<https://www.twdb.texas.gov/waterplanning/data/projections/2027/projections.asp>



# Steam-Electric Power Methodology

Water sources: fresh and brackish groundwater, fresh surface water, reuse

- Consumptive use

2030 – 2080 held constant

Same methodology as the 2021 RWPs

Draft projections released in January 2022

2026 Regional Water Plans Projections Methodology Overview (TWDB) Presentation dated 01/26/22



# Steam-Electric Power Methodology (cont.)

Baseline = highest county water use (2015-2019) + estimated water use for non-responses and proposed plants

- Historical water use survey
- U.S. Energy Information Administration 860 form – NAICS: 22

If a facility retires before 2020, then the water use is removed from the projections

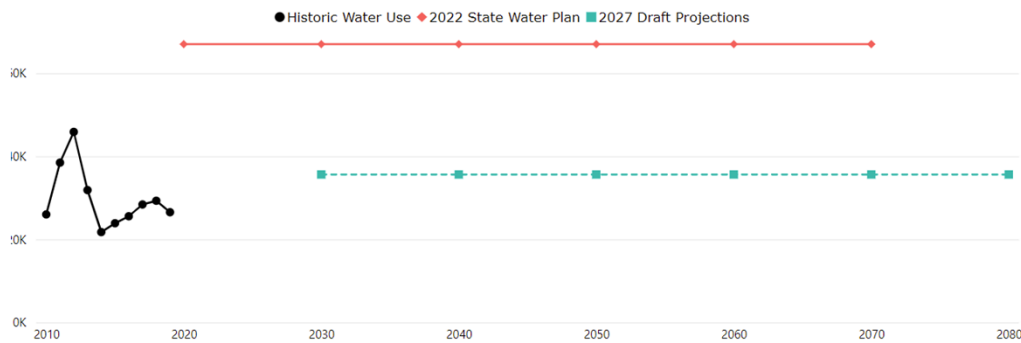
If RWPGs requested to remove a facility in the previous plan, then facility was removed in the 2026 draft projections

2026 Regional Water Plans Projections Methodology Overview (TWDB) Presentation dated 01/26/22





## Historical & Projected Steam-Electric Power Demand (ACFT)



<https://www.twdb.texas.gov/waterplanning/data/projections/2027/projections.asp>



## Questions?



PLUMMER

**Cynthia Syvarth**  
csyvarth@plummer.com  
512.687.2185





## **Agenda Item No. 10**

Consideration and Approval of nominations of planning group members to serve as a member and alternate to the Interregional Planning Council; and formally appoint liaisons for adjoining regions.



## **Agenda Item No. 11**

Consideration and Approval of blanket certification of administrative expenses for the 6th planning cycle contract No. 2148302561; and approve submission to the Texas Water Development Board as needed for reimbursement.





## **Agenda Item No. 12**

Consideration and Approval to authorize the City of Nacogdoches to negotiate and execute an amendment to the TWDB contract to incorporate the full scope of work and total project cost for the 2026 Regional Water Plans.



## **Agenda Item No. 13**

Consideration and Approval of Executive Committee appointments

